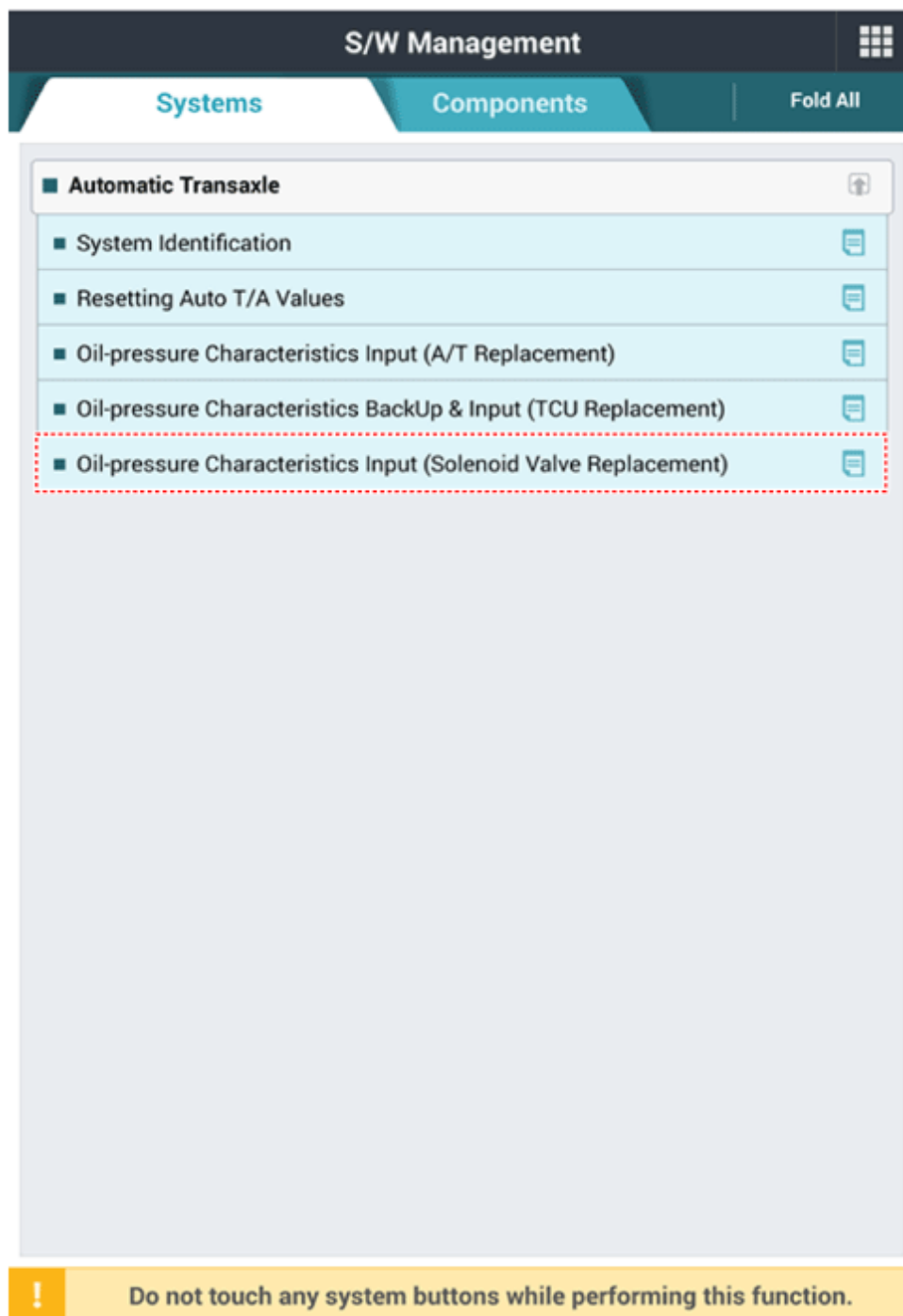


Please rate this document after reviewing at the bottom of this page.

OIL-PRESSURE CHARACTERISTICS INPUT

Solenoid valve oil-pressure characteristics input procedure

1. Perform the oil-pressure characteristics input procedure using the KDS.



2. Click the "OK" button after checking the condition.

■ Oil-pressure Characteristics Input (Solenoid Valve Replacement)

● [Oil Pressure Characteristics Input (Solenoid Valve Replacement)]

This function is to input oil pressure characteristics to TCU after solenoid valve replacement.

●[Condition]

1. IG On
2. Shift Lever : P
3. Vehicle Speed : 0 km/h
4. Engine Stop

If ready, please click **[OK]** button.

OK

Cancel



Do not touch any system buttons while performing this function.

3. Click the "OK" button after selecting the replaced solenoid valve.

■ Oil-pressure Characteristics Input (Solenoid Valve Replacement)

● [Oil Pressure Characteristics Input (Solenoid Valve Replacement)]

The process for oil pressure characteristics input is proceeded.

After selecting the replaced solenoid valve correctly, please Click **OK** button.

Solenoid valve selection :

6 Clutch control solenoid valve ▼

OK

Cancel



Do not touch any system buttons while performing this function.

4. Check the code that was recorded before installing the new solenoid valve.

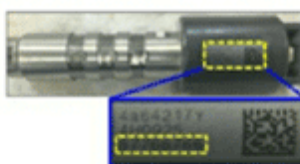
■ Oil-pressure Characteristics Input (Solenoid Valve Replacement)

● [Oil Pressure Characteristics Input (Solenoid Valve Replacement)]

This function is to input oil pressure characteristics to TCU after 6 Clutch control solenoid valve replacement.

If ready, Click **[OK]** button.

※ Caution : please check the code at first before replacement.



OK

Cancel



Do not touch any system buttons while performing this function.

5. Click the "OK" button after inputting oil pressure characteristics for the replaced solenoid valve.

■ Oil-pressure Characteristics Input (Solenoid Valve Replacement)

● [Oil Pressure Characteristics Input (Solenoid Valve Replacement)]

After inputting oil pressure characteristics for the replaced solenoid Valve, please click **[OK]** button.

WAGRC1575062		2C12		
	7776	5766	7878	8878
	7667	6667	7777	7777
			7788	8778
	7777	6FFF		

OK

Cancel



Do not touch any system buttons while performing this function.

* Thanks for your cooperation for the more quality. Please surely rate this document before closing.